

Brief Definitive Report**Rare Occurrence of Classical Hodgkin's Disease as a T Cell Lymphoma**

By Markus Müschen,^{*‡} Klaus Rajewsky,^{*} Andreas Bräuninger,[§]
 Audrey Sylvia Baur,^{||} Joost J. Oudejans,[¶] Axel Roers,^{*}
 Martin-Leo Hansmann,[§] and Ralf Küppers^{*‡}

From the ^{*}Institute for Genetics, Department of Immunology, and the [‡]Department of Internal Medicine, Universität zu Köln, 50931 Köln, Germany; the [§]Department of Pathology, University of Frankfurt, 60596 Frankfurt, Germany; the ^{||}University Institute of Pathology, University Hospital CHUV, 1011 Lausanne, Switzerland; and the [¶]Department of Pathology, Free University Hospital, 1081 HV Amsterdam, The Netherlands

Abstract

Recent work identified Hodgkin and Reed-Sternberg (H/RS) cells in classical Hodgkin's disease (cHD) as clonal progeny of mature B cells. Therefore, it is generally assumed that cHD homogeneously represents a B cell lymphoma. In a subset of cHD, however, H/RS cells expressing T cell-associated proteins may be candidates for alternative lineage derivation. Single H/RS cells with cytotoxic T cell phenotype were micromanipulated from three cases of cHD and analyzed by single cell polymerase chain reaction for immunoglobulin heavy (IgH) and light chain (IgL) gene rearrangements, T cell receptor (TCR)- β gene rearrangements, and germline configuration of the IgH and TCR- β loci. H/RS cells from two cases of cHD harbored clonal, somatically mutated Ig gene rearrangements, whereas TCR- β loci were in germline configuration. In contrast, H/RS cells from an additional case harbored clonal TCR- β variable/diversity/joining (VDJ) and DJ gene rearrangements, whereas the IgH locus was in germline configuration on both alleles. Thus, in two cases of cHD with H/RS cells expressing cytotoxic T cell molecules, the tumor cells are derived from mature B cells that aberrantly express T cell markers. In a third case, however, H/RS cells were derived from a T cell, demonstrating that cHD can also occur as a T cell lymphoma.

Key words: Hodgkin's disease • T cell receptor genes • immunoglobulin genes • somatic hypermutation • Epstein-Barr virus

Introduction

In classical Hodgkin's disease (cHD), the malignant Hodgkin and Reed-Sternberg (H/RS) cells typically account for <1% of cells within a complex admixture of lymphocytes, plasma cells, histiocytes, and eosinophils (1). The origin of H/RS cells in cHD was enigmatic and a matter of debate for more than a decade. Although H/RS cells usually lack expression of B lineage markers, there is now strong evidence that H/RS cells represent the outgrowth of a dominant tumor clone derived from mature B cells (2, 3). This conclusion is based on the amplification of clonally related Ig gene rearrangements from single micromanipulated

H/RS cells (4, 5). The presence and pattern of somatic mutations in the rearranged V genes identified germinal center B cells as the precursors of the tumor cells (5).

In a minority of cHD cases (~5–15%), however, H/RS cells express cytotoxic T cell markers (granzyme B, perforin, and T cell intracellular antigen 1 [TIA-1]), raising the possibility that the tumor cells in these cases might originate from T lymphocytes (6–9). To clarify whether H/RS cells in such cases are indeed derived from T lymphocytes, H/RS cells were micromanipulated and subjected to single cell PCR analysis for rearranged Ig heavy chain (IgH), Ig κ , and Ig λ light chain genes, TCR- β VDJ and DJ gene rearrangements, as well as IgH and TCR- β germline configuration (i.e., absence of rearrangements). Whereas IgH VDJ gene rearrangements are specific for and restricted to B lineage cells, the presence of TCR- β VDJ gene rearrangements identifies a T cell. Studying H/RS cells from three such cases, a B cell

Address correspondence to Markus Müschen, Universität zu Köln, Medizinische Klinik I, LFI E4 R705, Joseph-Stelzmann-Strasse 9, 50931 Köln, Germany. Phone: 49-221-478-4490; Fax: 49-221-478-6383; E-mail: markus.mueschen@uni-koeln.de

genotype was found in two, a genotype revealing T cell origin in one case.

Materials and Methods

Clinical data on the three cases of cHD are summarized in Table I.

Immunostaining and Micromanipulation. For immunostaining, 6–7- μ m frozen tissue sections were stained using antibodies against CD30 (Fig. 1 A), CD20, LMP1, anaplastic lymphoma kinase (ALK)-1 (Dako), CD15 (Fig. 1 C; Becton Dickinson), CD3 (Ortho), TCR- α/β (T Cell Diagnostics), perforin (Neo Markers), granzyme B (Monosan), and TIA-1 (Immunotech). Stained cells were mobilized and aspirated with the help of a micropipette fixed to a hydraulic micromanipulator. Multiple cells were picked from each section. Buffer covering the sections was aspirated as negative controls for PCR analysis. For positive control of PCR, single B and T cells were either micromanipulated or sorted by flow cytometry.

Single Cell PCR. To analyze individual micromanipulated cells for IgH, Ig κ , Ig λ , as well as TCR- β VDJ and DJ gene rearrangements or germline configuration of the IgH and TCR- β loci, whole genome preamplification (10) was performed. Aliquots from these reactions were then subjected to two rounds of seminested PCR amplification as described previously. For analysis of the IgH and TCR- β loci, three PCR strategies were applied (Fig. 2, A and B), one of which targets IgH (Fig. 2 A, iii) or TCR- β (Fig. 2 B, iii) VDJ rearrangements, a second IgH (Fig. 2 A, ii) or TCR- β (Fig. 2 B, ii) DJ rearrangements, and a third detects germline configuration of either the IgH (Fig. 2 A, i) or the TCR- β (Fig. 2 B, i) locus. Rearranged V_H, V κ , and V λ genes were amplified using family-specific leader or framework region V gene primers and two sets of J_H, J κ , and J λ primers in a seminested approach (5, 11, 12). D_HJ_H rearrangements and germline configuration within the IgH locus were detected using seven D_H family-specific primers and two sets of J_H gene-specific primers

in a seminested approach (5). In the case of germline configuration of the IgH locus, a 340-bp fragment was obtained with the D_H7 primer, due to the close vicinity of the D_H7-27 gene segment and J_H1 (Fig. 2 A, i). D_H family-specific primers were as follows: 5'-GTGTGCAGGCTCRGTCTCTGTG-3' for the D_H1 gene family; 5'-GCACTGGGCTCAGAGTCTCTC-3' for the D_H2 family; 5'-CCTCAGGTCAGCCCTGGACATC-3' for the D_H3 family; 5'-TGAGATCCCCAGGACGCAGCAC-3' for the D_H4 family; 5'-TCCCTGGGAAGCTCCTCCTGAC-3' for the D_H5 family; 5'-GACACCAGACAGAGGGGCAGGC-3' for the D_H6 family; and 5'-AGAGTGAAGTGGCAGGGTTG-AGG-3' for the D_H7-27 gene. Amplification of TCR- β VDJ gene rearrangements was carried out as described previously using a panel of 24 V β family-specific primers and two sets of J β gene-specific primers in a seminested approach (13). Germline configuration was detected separately for both C β loci (Fig. 2 B, i) using primers binding to intronic sequences flanking the D β 1 (5'-CCCCTTCGCCAAACAGCCTTA-3' as forward, 5'-GAG-TGAGGCAGAGGCATTCTGAAC-3' as external reverse, and 5'-GCAGAGGCATTCTGAACCAAATTG-3' as internal reverse primer) or the D β 2 gene (5'-TCAGGGTGATGCATGTTTCAAGGA-3' as forward, 5'-GGGACCCTGCAAGACCACAGCT-3' as external reverse, and 5'-ACTCTTCCCACCTGGTAGCTGCAT-3' as internal reverse primer). D β J β rearrangements were amplified using the primers specific for intronic sequences in the upstream regions of the D β 1 and the D β 2 genes, together with primers specific for the J β 1 or J β 2 gene clusters, respectively (Fig. 2 B, ii).

EBV infection of single H/RS cells was examined by amplification of a fragment of the EBV nuclear antigen 1 (EBNA1) gene by seminested PCR (5'-GGTCGCCGGTGTGTTTCGTATATGG-3' as forward, 5'-GCGGCAGCCCTTCCACCATAG-3' as external reverse, and 5'-AGGGAGGCAAATCTACTCCATCGTC-3' as internal reverse primer).

PCR products were gel-purified and directly sequenced.

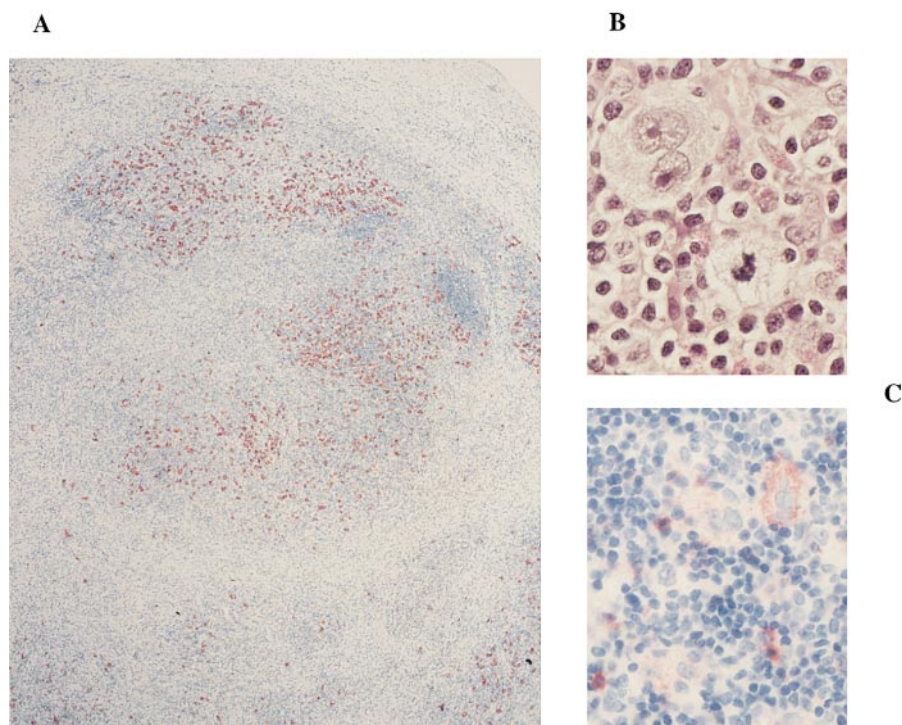


Figure 1. Immunostaining of cHD, case III. Histological stainings were as follows: (A) the tissue is stained for CD30 with the use of alkaline phosphatase (4-fold magnification); (B) hemalaun-eosin staining of some multinucleated Reed-Sternberg cells at 60-fold magnification; (C) staining for CD15 at 40-fold magnification. Staining of this case for expression of perforin is shown on the cover illustration of this issue.

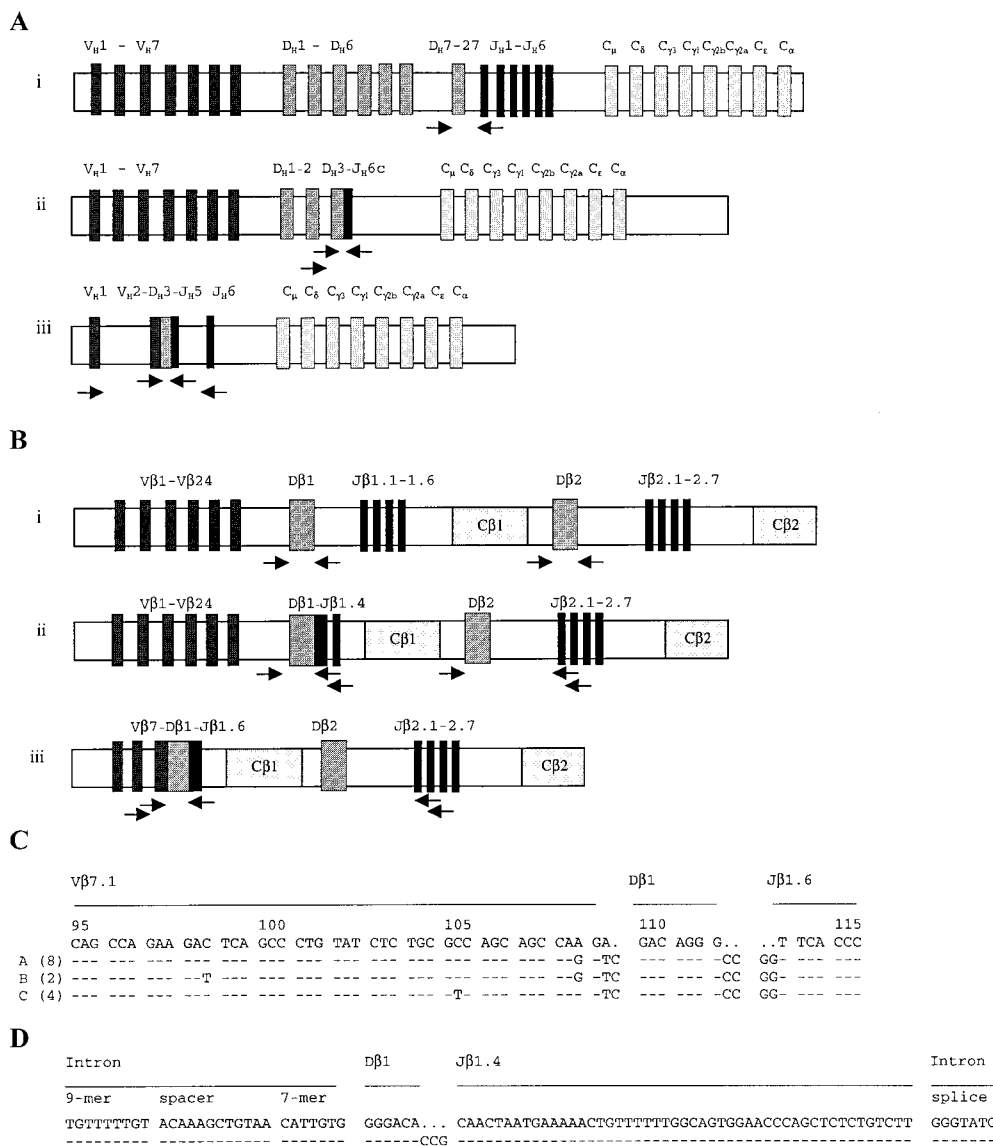


Figure 2. Amplification of IgH gene and TCR- β gene rearrangements from H/RS cells. PCR strategies for amplification of PCR products which are specific for IgH (A) or TCR- β (B) germline configuration (i), DJ gene rearrangements (ii), and VDJ gene rearrangements (iii) are depicted. V_H1-V_H7 and $V\beta1-V\beta24$ represent the seven Ig V_H gene families and the 24 TCR $V\beta$ gene families; and J_H1-J_H6 and $J\beta1.1-1.6$ and $J\beta2.1-2.7$ indicate the Ig J_H and the TCR $J\beta$ genes, respectively. The IgH DJ (A, ii) and IgH VDJ (A, iii) rearrangements and TCR- β DJ (B, ii) and TCR- β VDJ (B, iii) rearrangements depict those amplified from cases I and III, respectively. Arrows indicate the PCR primers used (not to scale). (C) A fragment (codons 95–115) of the sequence alignment of the clonal TCR $V\beta7.1-D\beta1-J\beta1.6$ rearrangement amplified from single H/RS cells of case III is given. The germline sequence of $V\beta7.1$, $D\beta1$, and $J\beta1.6$ genes (top) is compared with the clonal sequence variants (A, B, and C) obtained from eight, two, and four H/RS cells of case III, respectively. The three sequence variants (A, B, and C) differ by single nucleotide substitutions in codons 98, 105, and 108 (complete sequence data are available from GenBank/EMBL/DBJ under accession nos. AJ243645–AJ243647). (D) Sequence alignment of the clonal TCR $D\beta1-J\beta1.4$ rearrangement amplified from 14 H/RS cells of case III is given. In contrast to the clonal $V\beta7.1$ gene rearrangement (C), the $D\beta1-J\beta1.4$ gene rearrangement does not exhibit intraclonal diversity (complete sequence data is available from GenBank/EMBL/DBJ under accession no. AJ243648).

Downloaded from jem.rupress.org on December 8, 2011

Results

H/RS cells from all three cases studied exhibit the typical immunophenotype of the tumor cells in cHD, as they coexpress CD30 and CD15 (for case III, see Fig. 1) but lack expression of the B cell antigen CD20 (Table I). H/RS cells from cases I and II express in part granzyme B (see cover of this issue), and TIA-1 and are EBV-positive, whereas H/RS cells from case III express perforin in addition to granzyme B and TIA-1 and are EBV-negative (Table I). Since the majority of anaplastic large cell lymphomas express one or more of the cytotoxic T cell markers studied here (7–9), diagnosis of cHD was further corroborated by the lack of nu-

cleophosmin(NPM)-ALK gene expression in the H/RS cells. The NPM-ALK fusion protein arises from the translocation t(2; 5) (p23; q35), which is typically seen in anaplastic large cell lymphoma but not in cHD (14).

Efficiency of PCR amplification from single micromanipulated cells for all three cases was similar to that usually encountered (i.e., <40%, likely due to technical matters such as partial degradation or inaccessibility of DNA [3–5, 11–13]; Table II).

From case I, 50 CD30⁺ and 15 granzyme B⁺ H/RS cells were micromanipulated and analyzed by single cell PCR.

Table I. Case Description of Patients with cHD

| Case | I | II | III |
|-------------------------|-------------------|-------------------|-------------------|
| Age | 31 | 26 | 51 |
| Sex | Male | Male | Male |
| Presentation | First | First | First |
| LN biopsy site | Abdominal | Cervical | Inguinal |
| Stage | IIB | I | II |
| Hodgkin subtype | Mixed cellularity | Mixed cellularity | Nodular sclerosis |
| Phenotype of H/RS cells | | | |
| CD30 | + | + | + |
| CD15 | + | + | + |
| CD20 | – | – | – |
| CD3 | – | – | – |
| TCR- α/β | – | ND | – |
| Granzyme B | + (90%) | + (60%) | + (40%) |
| Perforin | – | – | + (100%) |
| TIA-1 | + (60%) | + (>90%) | + (40%) |
| EBV | + | + | – |
| ALK | – | ND | – |

Numbers in parentheses indicate percentages of positive Reed-Sternberg cells. Presence or absence of EBV was determined by amplification of a fragment of the EBNA1 gene from single H/RS cells, and the results were further confirmed in case I by LMP1 staining and in case III by EBER in situ hybridization. ALK expression is indicative for the t(2;5) translocation resulting in the expression of a fusion molecule with NPM.

From multiple H/RS cells of both subsets, a clonal Ig V_H2-5-D_H3-10-J_H5b and a clonal D_H3-9-J_H6c gene rearrangement were amplified. The V_H2 gene was rearranged in-frame, all sequences were identical, and the rearrangement was rendered nonfunctional by a somatic mutation generating a translation stop in codon 91 of framework region III (Table III). Thus, case I represents another example in which the H/RS cells have lost their capacity to express antigen receptor due to deleterious somatic mutations (5). No IgL, TCR- β VDJ, or DJ gene rearrangements were obtained analyzing multiple cells (Table II). Fragments corresponding to germline configuration of the IgH locus were not obtained, but fragments specific for germline configuration of the TCR C β 1 and C β 2 loci were repeatedly amplified (Table II). For the TCR C β 2 locus, germline configuration could be assigned to both alleles because of the detection of two polymorphic forms of the D β 2 gene (G and/or A at position 13 of the D β 2 gene; see reference 15).

Case II, which we studied previously for Ig gene rearrangements (4), was retrospectively found to express granzyme B and TIA-1 in a fraction of H/RS cells (Table I). 20 CD30⁺ H/RS cells and 10 TIA-1⁺ H/RS cells were micromanipulated and analyzed for IgH and Ig κ gene rearrangements and configuration of the TCR- β loci. Two clonal IgH and one clonal Ig κ gene rearrangement were amplified from

H/RS cells regardless of their phenotype (Tables II and III). V_H and V κ genes were somatically mutated. The V κ region gene and one of the V_H gene rearrangements, which had both likely been originally productive, were rendered nonfunctional by somatic mutations (Table III). For unknown reasons, a second clonal V κ gene rearrangement amplified in the first analysis was not obtained in the present study. No TCR- β gene rearrangements, but instead germline configuration for the TCR C β 1 and C β 2 loci, were detected (Table II).

Taking cases I and II together, amplification of clonal V_H gene rearrangements rendered non-functional by deleterious somatic mutations together with the detection of germline configuration in both TCR- β loci identify the H/RS cells in these cases as the progeny of germinal center B cells that have lost their capacity to express antigen receptor due to “crippling” somatic mutations.

From case III, in which virtually all H/RS cell express perforin (Table I), 30 CD30⁺ H/RS cells were analyzed for IgH, Ig κ , and Ig λ gene rearrangements (half of the cells were in addition analyzed with V_H leader, IgH DJ, and IgH germline primer collections). Only one IgH VDJ gene amplicon was obtained, likely representing cellular or other contamination (Table II). No IgH DJ gene rearrangement was obtained. However, a fragment specific for germline configuration was repeatedly amplified from H/RS cells. Within these IgH germline fragments, two distinct sequences of the J_H ψ 1 pseudogene (G and/or A at position 45 of the J_H ψ 1 pseudogene; see reference 16) were detected, suggesting that both alleles of the IgH locus are in germline configuration. In contrast, analysis of the TCR- β loci yielded two clonal rearrangements involving the two alleles of the TCR C β 1 locus in about half of the H/RS cells. One allele harbors a clonal V β 7.1-D β 1-J β 1.6 rearrangement (Fig. 2 C), whereas the other carries a clonal D β 1-J β 1.4 gene rearrangement (Fig. 2 D). The V β 7.1 gene rearrangement is potentially functional. Unexpectedly, it exhibits intraclonal diversity (Fig. 2 C). Three different sequences were obtained (Fig. 2 C, sequences A–C). The three sequence variants were confirmed by repeated reamplification and sequencing from distinct aliquots of the whole genome amplification. Taken together, in case III the single cell PCR results identify a T cell as the progenitor of the tumor clone, thus classifying this case of cHD as a T cell lymphoma.

Discussion

Derivation of H/RS cells from mature B cells was previously demonstrated in 18 out of 18 informative unselected cases of cHD analyzed in Cologne and Frankfurt (3–5, 17–19). In addition, recent results obtained by others indicate B cell derivation of H/RS cells in 24 out of 25 cases of cHD (20). On the other hand, in a nonselected collection of 13 cases of primary cHD, Daus and colleagues did not detect clonal TCR- γ gene rearrangements in micromanipulated H/RS cells from any of these cases (21). Therefore, these data collectively indicate that cHD represents a homogeneous entity as a B cell lymphoma.

Table II. Summary of Single Cell PCR Analysis of Three Cases of cHD

| Case | Gene locus* | Staining for micromanipulation | H/RS cells positive | PCR products | | Rearrangements or germline configuration | | Buffer controls positive |
|------------|-------------|--------------------------------|---------------------|-----------------------------------|--------------------------|--|---------------------|--------------------------|
| | | | | Total | Sequenced | Repeated | Unique [‡] | |
| I | IgH | CD30 | 21/50 | 19 V _H 2 | 17 | 17 V _H 2 | | 0/15 |
| | | | | 1 V _H 3 | 1 | | 1 V _H 3 | |
| | | | | 1 V _H 4 | 1 | | 1 V _H 4 | |
| | | | 9/14 | 9 D _H 3-J _H | 9 | 9 D _H 3-9-J _H 6c | | 0/4 |
| | | Granzyme B | 3/15 | 3 V _H 2 | 3 | 3 V _H 2 | | |
| | Igκ | CD30 | 0/16 | | | | | 0/4 |
| | Igλ | CD30 | 0/8 | | | | | 0/4 |
| | TCR Cβ1 | CD30 | 9/20 | 9 germline | 9 | 9 germline | | 0/14 |
| | | Granzyme B | 3/15 | 3 germline | 3 | 3 germline | | |
| | TCR Cβ2 | CD30 | 9/20 | 9 germline | 9 | 9 germline [§] | | 0/14 |
| Granzyme B | | 3/15 | 3 germline | 2 | 2 germline | | | |
| EBNA1 | CD30 | 7/10 | 7 EBNA1 | | | | 0/4 | |
| II | IgH | CD30 | 8/20 | 6 V _H 1 | 6 | 6 V _H 1 | | 0/6 |
| | | | | 7 V _H 3 | 6 | 6 V _H 3 | | |
| | | | | | | | | |
| | | TIA-1 | 3/10 | 2 V _H 1 | 2 | 2 V _H 1 | | 0/6 |
| | | | | 3 V _H 3 | 2 | 2 V _H 3 | | |
| | Igκ | CD30 | 9/20 | 9 V _κ 1 | 7 | 7 V _κ 1 | | 0/6 |
| | | TIA-1 | 2/10 | 3 V _κ 1 | 2 | 2 V _κ 1 | | |
| | TCR Cβ1 | CD30 | 4/20 | 4 germline | | | | 0/4 |
| | | TIA-1 | 6/10 | 6 germline | | | | |
| | TCR Cβ2 | CD30 | 9/20 | 9 germline | | | | 0/4 |
| TIA-1 | | 4/10 | 4 germline | | | | | |
| EBNA1 | CD30 | 8/20 | 8 EBNA1 | | | | 0/6 | |
| | TIA-1 | 5/10 | 5 EBNA1 | | | | | |
| III | IgH | CD30 | 1/30 | 1 V _H 3 | 1 | | 1 V _H 3 | 0/10 |
| | | | 6/15 | 6 germline | 6 | 6 germline [§] | | 0/4 |
| | Igκ | CD30 | 0/30 | | | | | 0/10 |
| | Igλ | CD30 | 0/30 | | | | | 0/10 |
| | TCR Cβ1 | CD30 | 20/30 | 14 Vβ7 | 14 | 14 Vβ7 | | 1/10 [†] |
| | | | | 14 Dβ1-Jβ1 | 14 | 14 Dβ1-Jβ1.4 | | |
| | | | | 1 germline | 1 | | 1 germline | |
| TCR Cβ2 | CD30 | 17/30 | 17 germline | 7 | 7 germline | | 0/10 | |
| EBNA1 | CD30 | 0/10 | | | | | 0/4 | |
| Controls: | | | Micromanipulated | | Sorted by flow cytometry | | | |
| | Gene locus | | B cells | T cells | B cells | T cells | | |
| | IgH | VDJ | 5/22 | 0/12 | 8/15 | | | |
| | | DJ/germline | | | 9/10 | | | |
| | Igκ | | 3/14 | | 4/7 | | | |
| | Igλ | | 3/14 | | 3/7 | | | |
| | TCR-β | VDJ | | 6/22 | | 7/9 | | |
| | | DJ/germline | | 16/22 | | 16/18 | | |

*For IgH and IgL loci, only V(D)J rearrangements; for TCR-β loci, VDJ and DJ rearrangements as well as fragments specific for germline configurations were amplified. Cases I and III were also analyzed for D_HJ_H rearrangements and germline configuration of the IgH locus.

[‡]Representing most likely cellular or other contamination.

[§]These loci were found in germline configuration on both alleles due to a germline polymorphism of the Dβ2 gene (case I) and the JHψ1 gene (case III).

^{||}15 of the H/RS cells from case III were in addition analyzed using V_H leader primers.

[†]The contamination amplified from one buffer control represents a TCR Cβ1 germline PCR product.

Table III. Sequence Analysis of Clonal Ig and TCR- β Gene Rearrangements

| Case | Gene locus | Rearrangement* | Potentially functional | Percent mutation | Remarks |
|------|--------------------------|---|------------------------|------------------|---|
| I | IgH | V _H 2-5-D _H 3-10-J _H 5b | No [‡] | 4.3 | Stop (codon 91) |
| | | D _H 3-9-J _H 6c | n.a. | 0.9 | TCR- β loci in germline |
| II | IgH | V _H 1-8-D _H 3-22-J _H 6b [§] | No | 3.5 | 47-bp deletion; |
| | IgH | V _H 3-53-D _H 2-2-J _H 6b [§] | No [‡] | 1.9 | Stop in CDR3 |
| | Ig κ [§] | V κ 1 (L12)-J κ 1 [§] | No [‡] | 1.3 | Stop in CDR3 TCR- β loci in germline |
| III | TCR- β | V β 7.1-D β 1-J β 1.6 | Yes | 0.3-0.7 | Sequence variations involving codons 98, 105, and 108; three variants |
| | TCR- β | D β 1-J β 1.4 | n.a. | 0 | IgH locus in germline |

n.a., not applicable.

*Sequences of cases I and III are available from GenBank/EMBL/DDBJ under accession nos. AJ243643-AJ243648 and AJ251000-AJ251002.

[‡]These rearrangements were potentially functional before introduction of a stop codon.

[§]Sequences of this case have been published previously (reference 4).

^{||}This rearrangement was potentially functional before the 47-bp deletion.

[†]This rearrangement was likely originally nonfunctional due to a stop codon generated during VDJ recombination.

However, there are some observations raising the possibility that—in a subset of cHD—the tumor cells might stem from T lymphocytes. Some putative H/RS cell lines, for example, are derived from T cells (2). For these cell lines, proof of derivation from H/RS cells in the patients is missing. Furthermore, a TCR- α gene rearrangement was amplified from whole tissue DNA of lymphomatoid papulosis, cHD, and anaplastic large cell lymphoma occurring sequentially in one individual patient, suggesting a common T cell derivation of the three diseases (22). However, assignment of T cell genotype to H/RS cells of the Hodgkin's lymphoma was not conclusive: anaplastic large cell lymphoma versus classic cHD is often a difficult differential diagnosis (1, 14). In this case, a clear discrimination between the two entities was particularly complicated because H/RS cells coexpressing CD30 and CD15 were found in both lymphomas. Furthermore, the TCR- α gene rearrangement identified in the Hodgkin's disease biopsy with the help of clone-specific primers represented a faint band, which might have arisen from a few contaminating cells originating from either the lymphomatoid papulosis or the anaplastic large cell lymphoma instead of the cHD. Finally, H/RS cells in a minority of cHD cases express cytotoxic granular molecules, in particular granzyme B, perforin, and TIA-1, which are otherwise typically found in cytotoxic T lymphocytes (6-9). Three such cases were analyzed here.

In cases I and II, molecular analysis of Ig and TCR- β loci revealed that the H/RS cells, despite expression of granzyme B and TIA-1 (Table I), were derived from germinal center B cells. Thus, expression of granzyme B and TIA-1 does not necessarily reflect a T cell origin of H/RS cells and shows that granzyme B and TIA-1 are aberrantly expressed by B lineage-derived H/RS cells. Similarly, expression of mole-

cules thought to be specific for cells of the dendritic/myeloid lineage (23) by H/RS cells does not apparently reflect a derivation of these cells from dendritic or myeloid cells. Thus, H/RS cells can mimic cells of various hematopoietic lineages in terms of cell surface marker expression.

In case III, the H/RS cells harbor a clonal TCR- β VDJ and a clonal DJ gene rearrangement but no clonal Ig gene rearrangement. Furthermore, the IgH locus was found in germline configuration biallelically, directly demonstrating the absence of clonal IgH gene rearrangements. Given that the presence of a TCR- β VDJ gene rearrangement defines a T cell, the H/RS cells in this case are derived from a T lymphocyte. The V β 7.1 gene rearrangement amplified from the T cell tumor clone exhibits significant intracлонаl diversity. This was not expected, since TCR genes in T cells are usually not subject to somatic hypermutation, although there are some reports claiming the rare occurrence of somatically mutated TCR genes (24-26). Notably, somatic mutations were not observed in the D β 1-J β 1.4 rearrangement or in intronic sequences flanking the germline D β 2 gene (830-bp sequences; see Table II). The distribution of somatic mutations among the distinct gene fragments of the TCR- β loci argues in favor of somatic hypermutation rather than some other type of somatic mutation (e.g., "genomic instability") as the cause for the mutations in the TCR- β VDJ genes: in analogy to the Ig loci, somatic hypermutation would be expected to preferentially target VDJ joints rather than DJ rearrangements or germline genes, whereas genomic instability should not specifically target rearranged VDJ genes. Whether these mutations indeed reflect somatic hypermutation outside Ig loci, however, remains unclear.

In ~5-15% of all cases of cHD, the H/RS cells exhibit cytotoxic T cell phenotype. Studying three of these cases, we

found one to be T cell derived. Apart from this, 18 out of 18 nonselected cases of cHD in our collection are B lineage derived. On this basis, a rough estimate would be that cHD occurs as a T cell lymphoma at a low frequency (i.e., <5%).

This study establishes that rare cases of cHD derived from T cells indeed exist, indicating that cHD as defined by histopathology is not a uniform disease. It is remarkable that the transformation of both T and B cells can lead to the H/RS cell phenotype. Whether this reflects an initial transforming event inside the germinal center microenvironment in both cases and whether T and B cell derived H/RS cells can be distinguished in terms of gene expression patterns remain to be established.

We thank Michaela Fahrig, Christiane Gerhard, Julia Jesdinsky, and Tanja Schaffer for expert technical assistance; Manuel Montesinos-Rongen, Dr. Berit Jungnickel, and Dr. Ulf Klein for encouraging discussions; and Dr. Tilmann Spieker for performing EBV-encoded small RNA (EBER) *in situ* hybridization.

This work was supported by the Deutsche Forschungsgemeinschaft through SFB 502 and the Deutsche Krebshilfe, Dr. Mildred Scheel Stiftung.

Submitted: 13 September 1999

Revised: 13 October 1999

Accepted: 19 October 1999

References

- Burke, J.S. 1992. Hodgkin's disease: histopathology and differential diagnosis. In *Neoplastic Hematopathology*. D.M. Knowles, editor. Lippincott, Williams and Wilkins, Baltimore. 497-533.
- Küppers, R., and K. Rajewsky. 1998. The origin of Hodgkin and H/RS cells in Hodgkin's disease. *Annu. Rev. Immunol.* 6:471-493.
- Bräuninger, A., M.-L. Hansmann, J.G. Strickler, R. Dummer, G. Burg, K. Rajewsky, and R. Küppers. 1999. Identification of common germinal-center B-cell precursors in two patients with both Hodgkin's disease and non-Hodgkin's lymphoma. *N. Engl. J. Med.* 340:1239-1247.
- Küppers, R., K. Rajewsky, M. Zhao, G. Simons, R. Laumann, R. Fischer, and M.-L. Hansmann. 1994. Hodgkin disease: Hodgkin and H/RS cells picked from histological sections show immunoglobulin gene rearrangements and appear to be derived from B cells at various stages of development. *Proc. Natl. Acad. Sci. USA.* 91:10962-10966.
- Kanzler, H., R. Küppers, M.-L. Hansmann, and K. Rajewsky. 1996. Hodgkin and H/RS cells in Hodgkin's disease represent the outgrowth of a dominant tumor clone derived from (crippled) germinal center B cells. *J. Exp. Med.* 184:495-505.
- Oudejans, J.J., J.A. Kummer, M. Jiwa, P. van der Valk, G.J. Ossenkoppele, P.M. Kluin, J.C. Kluin-Nelemans, and C.J. Meijer. 1996. Granzyme B expression in H/RS cells of Hodgkin's disease. *Am. J. Pathol.* 148:233-240.
- Foss, H.D., I. Anagnostopoulos, I. Araujo, C. Assaf, G. Demel, J.A. Kummer, M. Hummel, and H. Stein. 1996. Anaplastic large-cell lymphomas of T-cell and null-cell phenotype express cytotoxic molecules. *Blood.* 88:4005-4011.
- Felgar, R., W.R. Macon, M.C. Kinney, S. Roberts, T. Pasha, and K.E. Salhany. 1997. TIA-1 expression in lymphoid neoplasms. Identification of subsets with cytotoxic T lymphocyte or natural killer cell differentiation. *Am. J. Pathol.* 150:1893-1899.
- Krenacs, L., A. Wellmann, L. Sobara, A.W. Himmelmann, E. Bagdi, E.S. Jaffé, and M. Raffeld. 1997. Cytotoxic cell antigen expression in anaplastic large-cell lymphomas of T- and null-cell type and Hodgkin's disease: evidence for distinct cellular origin. *Blood.* 89:980-989.
- Zhang, L., X. Cui, K. Schmitt, R. Hubert, W. Navidi, and N. Arnheim. 1992. Whole genome amplification from a single cell: implication for genetic analysis. *Proc. Natl. Acad. Sci. USA.* 89:5847-5851.
- Bräuninger, A., R. Küppers, T. Spieker, R. Siebert, J.G. Strickler, B. Schlegelberger, K. Rajewsky, and M.-L. Hansmann. 1999. Molecular analysis of single B cells from T-cell-rich B-cell lymphoma reveals the derivation of the tumor cells from mutating germinal center B cells and exemplifies means by which immunoglobulin genes are modified in the germinal center B cells. *Blood.* 93:2679-2687.
- Braeuninger, A., R. Küppers, J.G. Strickler, H.W. Wacker, K. Rajewsky, and M.-L. Hansmann. 1997. Hodgkin and Reed Sternberg cells in lymphocyte predominant Hodgkin disease represent clonal populations of germinal center-derived tumor B cells [published erratum at 94:14211]. *Proc. Natl. Acad. Sci. USA.* 94:9337-9342.
- Roers, A., M. Montesinos-Rongen, M.-L. Hansmann, K. Rajewsky, and R. Küppers. 1998. Amplification of TCR β gene rearrangements from micromanipulated single cells: T cells rosetting around Hodgkin and H/RS cells in Hodgkin's disease are polyclonal. *Eur. J. Immunol.* 28:2424-2431.
- Weiss, L.M., J.R. Lopategui, L.H. Sun, O.W. Kamel, C.H. Koo, and C. Glackin. 1995. Absence of the t(2; 5) in Hodgkin's disease. *Blood.* 85:2845-2847.
- Tunnacliffe, A., and T.H. Rabbitts. 1985. Sequence of the DB2-J β 2 region of the human T-cell receptor β -chain locus. *Nucleic Acids Res.* 13:6651-6661.
- Ravetch, J.V., U. Siebenlist, S. Korsmeyer, T. Waldmann, and P. Leder. 1981. Structure of the human immunoglobulin μ locus: characterization of embryonic and rearranged J and D genes. *Cell.* 27:583-591.
- Kanzler, H., M.-L. Hansmann, U. Kapp, J. Wolf, V. Diehl, K. Rajewsky, and R. Küppers. 1996. Molecular single cell analysis demonstrates the derivation of a peripheral blood-derived cell line (L1236) from the Hodgkin/H/RS cells of a Hodgkin's lymphoma patient. *Blood.* 87:3429-3436.
- Irsch, J., S. Nitsch, M.-L. Hansmann, K. Rajewsky, H. Tesch, V. Diehl, A. Jox, R. Küppers, and A. Radbruch. 1998. Isolation of viable Hodgkin and H/RS cells from Hodgkin disease tissues. *Proc. Natl. Acad. Sci. USA.* 95:10117-10122.
- Vockerodt, M., M. Soares, H. Kanzler, R. Küppers, D. Kube, M.-L. Hansmann, V. Diehl, and H. Tesch. 1998. Detection of clonal Hodgkin and H/RS cells with identical somatically mutated and rearranged V_H genes in different biopsies in relapsed Hodgkin's disease. *Blood.* 92:2899-2907.
- Hummel, M., T. Marafioti, and H. Stein. 1999. Clonality of Reed-Sternberg cells in Hodgkin's disease. *N. Engl. J. Med.* 340:394-395.
- Daus, H., L. Trümper, J. Roth, F. von Bonin, P. Möller, A. Gause, and M. Pfreundschuh. 1995. Hodgkin and Reed-Sternberg (H/RS) cells do not carry TCR γ rearrangements: evidence from a single cell polymerase chain reaction examination. *Blood.* 85:1590-1595.
- Davis, T., C.C. Morton, R. Miller-Cassman, S.P. Balk, and M.E. Kadin. 1992. Hodgkin's disease, lymphomatoid papu-

- losis, and cutaneous T cell lymphoma derived from a common T-cell clone. *N. Engl. J. Med.* 326:1115–1122.
23. Van den Berg, A., L. Visser, and S. Poppema. 1999. High expression of the CC chemokine TARC in H/RS cells. *Am. J. Pathol.* 154:1685–1691.
 24. Zheng, B., W. Xue, and G. Kelsoe. 1994. Locus-specific somatic hypermutation in germinal center T cells. *Nature.* 372:556–558.
 25. Cheynier, R., S. Henrichwark, and S. Wain-Hobson. 1998. Somatic hypermutation of the T cell receptor V β gene in microdissected splenic white pulps from HIV-1-positive patients. *Eur. J. Immunol.* 28:1604–1610.
 26. Marshall, B., R. Schulz, M. Zhou, and A. Mellor. 1999. Alternative splicing and hypermutation of a nonproductively rearranged TCR α -chain in a T cell hybridoma. *J. Immunol.* 162:871–877.